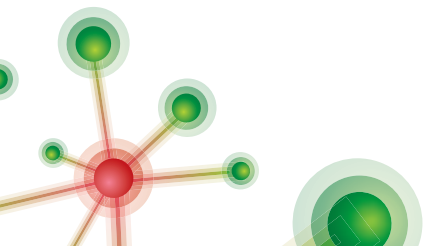
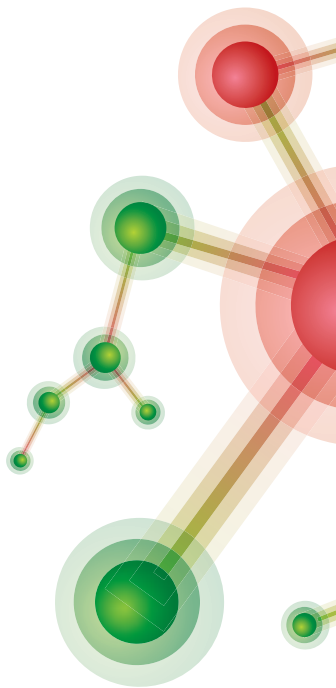


# IDEAL II

## DNA Ladder

(700-9276 bp)



# IDEAL II DNA Ladder

(700-9276 bp)

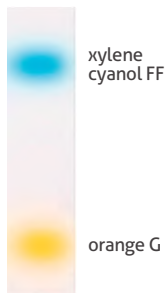
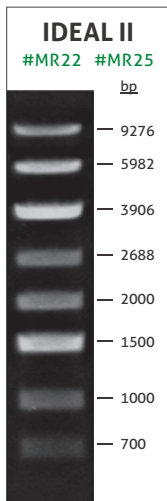
The **IDEAL II** molecular weight DNA ladder is designed for determining the size of large and medium PCR products, digested plasmids and other dsDNA fragments in the 700 - 9276 bp range. The **IDEAL II DNA Ladder** is a mixture of specially selected, purified, blunt-ended PCR products and sticky-ended DNA restriction products. It gives a clear band pattern. A DNA loading buffer (**6x GREEN**) is provided with each DNA ladder. The loading buffer contains Ficoll® 400, which facilitates rapid sinking to the bottom of the well in the agarose or polyacrylamide gel. The solution protects DNA thanks to the presence of EDTA, which inactivates nucleases and other enzymes by binding the divalent metal ions crucial to their activity. The **6xGREEN** solution contains two different dyes which migrate in the electrophoretic field differently from the standard size PCR products, ensuring that they do not hinder the analysis by image obscuration. The orange G dye corresponds to 50 bp and xylene cyanol FF to 4000 bp PCR products in a 1% agarose gel.

The **IDEAL II DNA Ladder** is also supplied in a ready-to-use version pre-mixed with **6x GREEN** DNA loading buffer.

## Features and advantages

- Allows precise determination of large and medium sized DNA fragments
- Gives a clear band pattern in a wide DNA size range
- Sharp bands are obtained after electrophoresis
- Suitable for gels stained with ethidium bromide, SYBR Green or other stain for DNA visualization
- Ready-to-use: direct gel loading

## IDEAL II DNA Ladder (700-9276 bp)



### DNA fragment sizes (bp)

9276, 5982, 3906, 2688, 2000, 1500, 1000, 700

### Usage

- For the best results, apply approx. 10  $\mu$ l of the DNA ladder per well.
- Mix 1 volume of DNA loading dye with 5 volumes of analyzed DNA and/or DNA ladder before application.

## IDEAL II DNA Ladder

Components	MR22 50-100 applications	MR25 50-100 applications
<b>IDEAL II DNA Ladder</b> (700-9276 bp)	500 µl	500 µl (ready-to-use)
<b>6x GREEN</b> DNA Loading Buffer	500 µl	500 µl

### Additional information

#### Storage buffer

10 mM Tris-HCl (pH 7.6),  
1 mM EDTA

#### 6x GREEN DNA Loading Buffer

20 mM Tris-HCl (pH 7.6), 60 mM  
EDTA, 0.03% xylene cyanol FF,  
0.15% orange G, 15% Ficoll® 400

#### Shipping conditions

Shipping at room temperature

#### Storage conditions

Keep at +4°C or room temperature  
for short-term or at -20°C for  
long-term storage.

#### Quality control

The DNA ladders have been tested  
in various kinds of agarose and  
polyacrylamide gels. The absence  
of nucleases has been confirmed  
by the relevant QC procedures.

 For research use only

Date of purchase

Warranty

12 months from the date of purchase